



COMMUNITY CRICKET RETURN TO TRAIN & PLAY

SEASON 2020/21 COVID-19 PLAN

VERSION 2 | EFFECTIVE FROM 28 SEPTEMBER 2020

CONTENTS

HOW TO USE THIS COVID-19 PLAN	3
KEY CHANGES FROM THE PREVIOUS VERSION	3
ROADMAP FOR THE RETURN OF COMMUNITY CRICKET	4
COVID-19 COMMITMENT	5
2020/21 COVID-19 SAFETY OFFICER PLANNING	6
RETURN TO TRAINING – GENERAL INFORMATION	8
COVID-19: CRICKET TRAINING SESSION PLAN	9
RETURN TO TRAINING PLAN – GUIDANCE INFORMATION FOR CLUBS	10
OK TO PLAY!	13
ASSOCIATION - COVID-19 RETURN TO PLAY MATCH DAY CONDITIONS	14
GENERAL COVID SAFETY PROTOCOLS FOR COMMUNITY CLUBS	16
MORE INFORMATION	19
ADDITIONAL WEBSITES / LINKS	20

The following guidance is general in nature and should not be relied upon as legal advice or a comprehensive statement of obligations.

While all care has been used in preparation of this guide to the date below, information and guidance is changing rapidly.

Associations & Clubs should remain vigilant and ensure that they familiarise themselves with the latest COVID-19 advice from DHHS, Sport & Recreation Victoria, Cricket Victoria, your local council and other relevant authorities and obtain advice where necessary for your specific circumstances. If in doubt, check first.

HOW TO USE THIS COVID-19 PLAN

1. Include the Club / Association details on the editable pages (5, 9, 14, 15, 19, 24, 26, 28) and have the club formally endorse the plan at the next available opportunity. N.B.: If the previous Plan has already been approved, it is recommended that the new Plan be approved and replace the old Plan. *(Key changes are noted below)*
2. Make sure the committee, coaches, officials and players are fully aware of the plan. Promote it widely – including to members, parents, local council, sponsors etc. – via your website, social media, newsletter, on-line meetings etc.
3. Print out / laminate and prominently display the following pages:

KEY PAGES FOR REGULAR USE	TRAINING	MATCH DAY
COVID-19 TRAINING SESSION PLAN (SEE PAGE 9)	✓	
OK TO PLAY! MATCH DAY POSTER (SEE PAGE 13)		✓

N.B.: It is also advisable to have the Association Match Day conditions guide printed out and available near the scorers on match day (see pages 14-15)

4. Stay updated on the latest advice and any changes via Cricket Victoria, DHHS and your local council. Where significant changes are made, an updated editable version will be released.
N.B. Changes announced from the State Government will supersede any earlier contrary information provided in this document.

KEY CHANGES FROM THE PREVIOUS VERSION

The most significant changes to the previous Version 1" (dated September 18) include:

- Addition of Return to Community Cricket Roadmap covering Regional Victoria and Metropolitan Melbourne – including revised SRV spectator limit reference (Page 4)
- Section added for the club to 'e-sign' the commitment statement (page 5)
- Reference to approved sanitiser for balls, hands and equipment has changed from "minimum 70%-alcohol based sanitiser" to "minimum 70%-alcohol (ethanol or isopropyl alcohol (IPA) based antibacterial wipe or spray"
- Added guidance for the number of groups allowed to train at the same time per regional facility where a facility has 2 grounds i.e. those with 2 grounds can have 2 groups of 10 per oval plus a group in the nets – 50 Maximum
- Equipment sharing is now allowed as long as it is kept to a minimum and all items of equipment are cleaned before sharing – refer (page 21)
- Removed practical resources/posters and have added link to them on CV website

FREQUENTLY ASKED QUESTIONS

N.B.: A FAQ section has been added to the Cricket Victoria website should further clarity be required. For extra support, contact can also be made with your local Regional Cricket Victoria contact for clarity

ROADMAP FOR THE RETURN OF COMMUNITY CRICKET

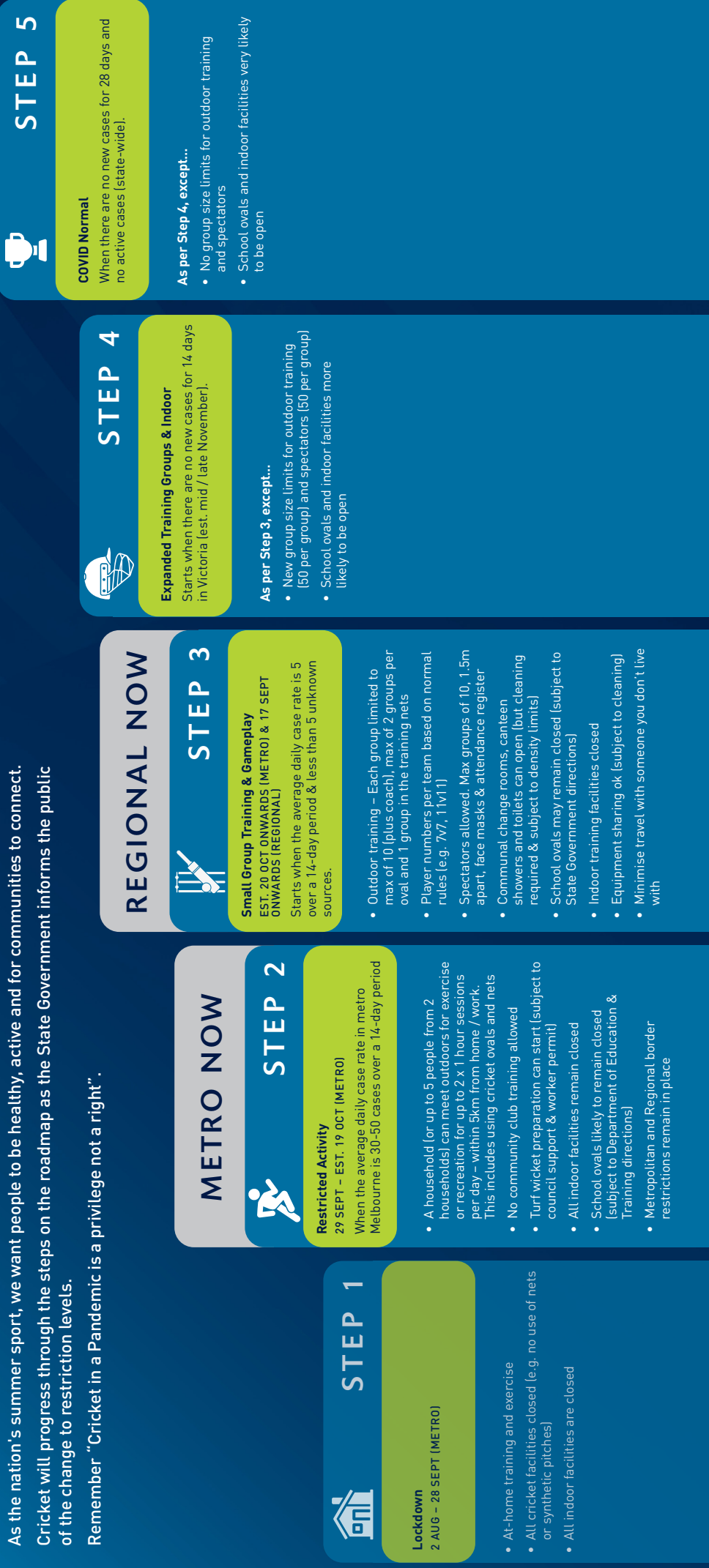


The below roadmap shows the steps that Cricket can take based on the current Victorian State Government roadmap for community sport. Everybody involved in cricket wants to see cricket returned to 'normality' as soon as possible, but we need to play our part in complying with the State Government directions – including group sizes for training, wearing a face covering, hygiene protocols etc.

As the nation's summer sport, we want people to be healthy, active and for communities to connect.

Cricket will progress through the steps on the roadmap as the State Government informs the public of the change to restriction levels.

Remember "Cricket in a Pandemic is a privilege not a right".



OVERVIEW

As a club we are fully committed to providing a safe environment for members of our club (volunteers, players, families, spectators) and the wider community and are committed to providing quality practices in line with guidance available from Sport Australia, Cricket Australia, Cricket Victoria, our local council, the Victorian State Government / Department of Health & Human Services and other relevant authorities applicable to our club. We acknowledge that Cricket in a pandemic is a privilege, not a right. We all need to ensure we are all doing the right thing to ensure the safety of players, volunteers, officials and the local community.

We also acknowledge the key dates outlined within the Victorian State Government's Roadmap for re-opening will be followed as we undertake cricket activities during the 2020/21 season and we commit to adhering to the latest advice from Cricket Victoria, the Victorian State Government and the Department of Health & Human Services in this regard.

It is important for Cricket Associations and Clubs to lead and promote a strong culture of COVID-19 safety for the health and wellbeing of participants and the broader community as any breaches could have ramifications for members of the community and the continuation of the season.

COMMUNITY CRICKET CLUBS PLAY AN IMPORTANT ROLE IN:

- Reducing the spread of COVID-19;
- Promoting good hygiene practices amongst players and officials;
- Adhering and promoting the State Government Requirements around social distancing, and gatherings; and
- Following the clear protocols and requirements around returning to train & play.

Associations and Clubs affiliated through to Cricket Victoria agree to be respectful in adhering to the protocols outlined as part of the Return to Train & Play Guidelines as they form part of the current Government directions, and strong cricket sanctions can be applied to individuals and to clubs if they are in breach, in addition to any penalties applied by Government authorities.

COMMUNITY CRICKET CLUBS COMMIT TO THE FOLLOWING TO ALLOW COMMUNITY CRICKET TO BE UNDERTAKEN IN A COVID-19 ENVIRONMENT

1. Each Club must nominate at least one COVID Safety Officer who must undertake the free [Australian Government online COVID-19 Infection Control Training](#) prior to recommencement of Club activity. Certificate of completion shall be emailed to your Association(s) ASAP after the completion of the on-line Training (e.g. within 48 hours). Clubs are encouraged to have multiple people take ownership of this role and share the responsibility.
2. An attendance register which clearly identifies all participants, volunteers and officials in attendance must be used at training, matches, functions etc. and available upon request by the Association, Cricket Victoria &/or DHHS health authorities.
3. Sporting clubs that operate a café, canteen or bar within its facility, must strictly adhere to the restrictions on hospitality venues. Detailed guidelines of these requirements are available via these two links in blue for [Metro](#) & [Regional](#). Clubs must also comply with their liquor licence requirements (i.e. service times, red line plan, booth licence, etc.).
4. The latest return to train and match day protocols will be followed.

Signed on behalf of the Club / Association

Signature:



Name:

Stuart Easton

Position:

President

Date:

4/10/20

2020/21 COVID-19 SAFETY OFFICER PLANNING

The impacts of COVID-19 are well-known and community sport is not immune from the impacts for multiple reasons. In addition to the potential personal health, wellbeing and financial impacts for players, officials and volunteers, the financial impacts on all clubs and associations will be real and potentially significant. Additionally, how clubs and associations navigate the complexities surrounding return to train and play protocols will be an additional factor clubs and associations will need to consider for 2020/21 (and potentially 2021/22).

The following is a guide to assist clubs and associations manage the requirements:

WHO

- It is strongly advised that clubs and associations identify the oversight for COVID-19 compliance to a designated person who takes the lead to help the club and association navigate the requirements; and
- In addition, it is advisable to have a representative from each team (Coach, Captain, Team Manager or Scorer) designated as support representatives - noting a single person can't manage it all.

WHAT

Priorities for the allocated club and association rep ("COVID-19 officers") include:

1. Undertake the free up to 30-minute general [on-line Infection Control – COVID-19 training](#) & email the certificate upon completion to your Association ASAP after completion.
2. Familiarise themselves with the latest CV Return to Train & Match Day guidelines available on the [CV website](#) and other resources available including [Cricket Australia](#), [ReturnToCricket](#), [VicSport](#) and [Sport Australia](#) (with links from the CV website). Any questions should first be checked:
 - a. Cricket Club facility usage: Facility Manager contact (typically council)
 - b. Indoor facility for indoor training usage: Indoor Centre Manager
 - c. Match Day protocols: Local Association
3. Work closely with council & authorities on various aspects including:
 - a. Who is overseeing (& paying for) any additional cleaning costs?
 - i. If it is the club responsibility to oversee – what is required from the council (products to use, frequency, areas to clean). Ideally the club & council can meet on site to go through requirements before and after training / matches.
 - b. Can (or should) the rooms be opened – noting [industry restart hospitality guidelines](#) including the 'four and two square metre rule' and use of density signage?
 - c. Can the council assist with any funding for supply of cleaning products and signage?
 - d. Do the club plans comply with liquor licencing requirements or is a temporary licence variation required for outdoor consumption?
4. Ensure the club has ample signage at matches / training and COVID-19 equipment. In addition to any products / signage that the council may be able to supply, gain support from the club to arrange for purchase of signage and cleaning products – noting a range of signage and COVID-19 products are available via [DHHS](#), [Cricket Victoria](#) & [Cricket Australia](#).
5. Ensure the club has ample signage at matches / training and COVID-19 equipment. In addition to any products/ signage that the council may be able to supply, gain support from the club to arrange for necessary signage and cleaning products – noting a range of free signage and at cost COVID-19 products are available via [DHHS](#), [Cricket Victoria](#) and [Cricket Australia](#). or at local contacts that Associations and Clubs may have
6. Ensure the training sessions and match day protocols are strictly adhered to – at all times.
7. Consider any others ideas as contained within the [Sport Australia COVID-19 Officer guide](#).

RETURN TO TRAIN RESOURCE SECTION

RETURN TO TRAINING – GENERAL INFORMATION

STEPS FOR CLUBS TO TAKE TO RETURN SAFELY TO TRAINING

1. Ensure you are allowed to start training based on the latest government advice and note specific restrictions (e.g. training group size). Check with your council that the ground, nets and access to the facility are available for the club to use (& the facility limits of each room)
2. Include the club name on single page “COVID-19 CRICKET TRAINING SESSION PLAN”
3. Make sure that the “COVID-19 CRICKET TRAINING SESSION PLAN” and the separate “ATTENDANCE REGISTER” are printed out, laminated and prominently displayed at all sessions
4. Make sure that all people who will attend training (players, parents, officials etc.) are fully aware of the “COVID-19 CRICKET TRAINING SESSION PLAN” and 2 page “RETURN TO TRAINING PLAN – GUIDANCE INFORMATION FOR CLUBS” – e.g. run a short zoom webinar for coaches, players etc, add key docs to your website, promote on social media and do a walk through for players and coaches at the first session
5. Keep reviewing your sessions to see if improvements could be made

IMPORTANT FEATURES OF THE ASSOCIATION & CLUB TRAINING PLAN

1. Clubs/teams are to strictly adhere to the current Victorian Government restrictions for non-contact sport – including group size. Groups are to be fully separated from other groups at all times – e.g. For a session with 30: 1 group of 10 in the nets, another group of 10 on ½ the oval and a 3rd group of 10 on the other ½ of the oval. If the club has 2 grounds next to each other, an additional 2 groups of 10 can train on the 2nd ground. The groups can rotate areas but not mix
2. Social / physical distancing of 1.5m must be maintained at all times. Strictly no physical contact between players can occur (i.e. consider how to do this at net sessions, fielding drills etc and no casual contact – e.g. high fives, handshakes etc.). N.B.: Community cricket will be different to the cricket you see on TV due to the extreme bio-security procedures that are in place at the elite level. Promote this point widely to players and parents
3. An attendance log/register which clearly identifies all people in attendance at each training session MUST be maintained and available upon request by the Association, Cricket Victoria or relevant authorities. In addition, all attendees should be encouraged to have downloaded the COVID-19 Safe App
4. Any indoor training should be minimised at present. Check with the indoor centre owner for more information on access and additional COVID-19 protocols

N.B. Access to any indoor facility (changerooms, social rooms, wet areas etc.) is discouraged at training and recommended to only using the kitchen / canteen on match day (Note this may change subject to State Government restrictions in force at the time). A minimum number of toilet facilities should always be available and cleaned regularly before, during and after sessions - with soap & water also readily available.

HYGIENE PROTOCOLS FOR A RETURN TO TRAINING

The hygiene protocols outlined are to be strictly adhered to at all times, with no exceptions:

1. There is strictly to be no sharing of personal items such as water bottles, food and towels.
2. Cricket equipment sharing should be kept to a minimum and must be cleaned with alcohol-based sanitizer between each use.
3. Nobody attending training shall spit or clear nasal passages
4. No high fives, handshakes, or other physical contact
5. Changerooms and wet areas are discouraged for training (i.e. players arrive at venue in training gear and must shower at home), although use of toilets is allowed
6. Attendees shall put hand sanitiser on arrival to training and every 30-40 minutes during the session and those over 12 to wear a face mask (except whilst batting, bowling, fielding)
7. Club provided cricket balls and equipment must be cleaned with minimum 70%-alcohol (ethanol or isopropyl alcohol (IPA) based antibacterial wipe or spray prior to and after each training session
8. Entry and exit points and touch points should be cleaned between sessions

COVID-19: CRICKET TRAINING SESSION PLAN

This guide has been established to support teams 'Returning to Training' under Victorian Government COVID-19 restrictions. Community clubs and teams have an obligation to strictly adhere to these protocols at every training session.

Before the session:

- Facility COVID-19 Hygiene and Social Distancing signs all up and visible.
- The 'check-in' / 'check-out' posters are available at all times & used by all training attendees.
- Any training equipment that will be used have been cleaned before use (e.g. balls, cones, stumps, bowling machines etc).
- The facility is currently closed (except toilet access). This includes changerooms & social areas. Any areas of the facility that may be touched (toilets, door handles etc) have been cleaned before attendees arrive. Ensure enough bins are available and soap & water for the toilet area
- Every second net is only used for one on one 'throw downs' or closed for use.
- Quality sanitiser & wipes are available in easy to find locations.
- Communicate training groups to players and have designated areas for each group to store their equipment

During the Session:

- All attendee's 'check-in' and use the hand sanitiser on arrival and re-apply every 30-40 minutes
- Train in small groups (Victorian Government "Step 3" = Max of 10. "Step 4" = Max of 50).
Groups do not mix with other groups at any stage before, during or post session.
*Maximum number of groups per oval is 2 plus a separate group in the nets.
An additional coach per group is permitted but they should observe the group of 10. If involved in drills, they are part of the 10.*
- All attendees are to refrain from spitting, nasal clearing and shall not use sweat or saliva on the balls
- Players should be dressed ready to train and no personal playing equipment is to be shared unless it has been wiped/cleaned between each use.
- Face masks are to be worn at all times by those over 11. All players (any age) are exempt from this requirement whilst batting, bowling and fielding
- All attendees adhere to facility signage directions and maintain a 1.5m distance to others

After the session:

- All attendees are to 'sign out' via the attendance register - for contact tracing assistance
- Designated officials wipe down/spray and store any equipment that has been used (including training balls) and any facility touch points
- Store any temporary signs and sanitiser

Cricket in a pandemic is a privilege – not a right! 'Get in. Train. Get Out.'

RETURN TO TRAINING PLAN GUIDANCE INFORMATION FOR CLUBS

The following guidance is general in nature and should not be relied upon as legal advice or a comprehensive statement of obligations.

While all care has been used in preparation of this guide to the date below, information and guidance is changing rapidly. Associations & Clubs should remain vigilant and ensure that they familiarise themselves with the latest COVID-19 advice from DHHS, Sport & Recreation Victoria, Cricket Victoria, your local council and other relevant authorities and obtain advice where necessary for your specific circumstances. If in doubt, check first.

Facility COVID-19 signs all up and visible

Places to obtain signs include ["ReturnToCricket"](#), [Cricket Victoria](#), [Cricket Australia](#), [Sport and Recreation Victoria](#), [DHHS](#) and [Sport Australia](#). COVID-19 resources & posters in other languages are also available via the DHHS website.

The 'check-in' / 'check-out' posters are available at all times & used by all training attendees

A 30 second contactless check-in via a mobile phone is recommended. A simple once only development of a poster with QR code reader will help clubs prove to DHHS who was at training to avoid all players & officials potentially being asked by DHHS to isolate at home for 14 days should a suspected or confirmed case arise. If a player or official has symptoms they should immediately leave training and only return after receiving a medical clearance and/or received a negative COVID-19 test result (preferred).

Two check in / out options are available for clubs:

- self-check in (recommended): "see the "Check In-Out" template for more information; or
- via Manually: "Sport Australia Attendance Register" to be filled out by a training coordinator.

N.B.: The check-in process can be completed by a parent/guardian on behalf of their child.

Any training equipment that will be used (e.g. balls, cones etc) have been cleaned before use

As COVID-19 can be spread through touching a surface that the virus lives on, minimising the number of training items to be used will reduce the likelihood of the virus spreading & reduce cleaning time. Training balls should be cleaned with a minimum 70%-alcohol (ethanol or isopropyl alcohol (IPA) based antibacterial wipe or spray before use and every 30-40 minutes - with minimal sharing during a session.

The benefits of the facility (except toilet access) being closed are to reduce cleaning requirements and the spread of infection - this includes changerooms & social areas. Any areas of the facility that may be touched (toilets, door handles etc) need to have been cleaned before attendees arrive.

If the facility is open (with council approval) and areas touched will need to be cleaned before and after use and noting [industry restart hospitality guidelines](#) including the ['four and two square metre rule'](#) and use of density signage

As wipes will be used, having adequate bins (with bin liner) available will be important. Bins should then be cleaned after use.

To appropriately clean the facility, contact your local facility owner/manager (e.g. council) for guidance and adhere to this guidance as a minimum. Should further guidance be required, SafeWork Australia has a 2-page guide. The DHHS website also has a separate 4-page guide and other useful information. As a guide, at Cricket Victoria, regular cleaning protocols at the CitiPower Centre see cleaners wear rubber gloves and face coverings and use cleaning detergent (Lemon Ocean Air PH7) with a damp cloth to clean potential touch points.

Should there be a suspected case or confirmed case at the club, immediately seek advice from DHHS via the Coronavirus Hotline 1800 675 398 and your council for more information about compliance with more rigorous 'deep' cleaning protocols that will be required.

Appropriate sanitiser & wipes are available in easy to find locations.

Wherever clubs chose to buy their alcohol based antibacterial wipes/spray from, these are to be a minimum 70%-alcohol (ethanol or isopropyl alcohol (IPA) based antibacterial wipe or spray

All attendees check in and use the hand sanitiser on arrival & re-apply every 30-40 minutes.

See the check-in guidance above for 'check in' and 'check out'. Ensuring regular use of sanitiser will help reduce the chances of spreading the virus.

Train in small group sizes (as per current State Government requirements/restrictions for Regional Victoria and Metropolitan Melbourne). Groups do not mix with other groups at any stage

If groups are separated and not mixing, this will help to reduce the chances of someone who has the virus spreading throughout the club. In addition, if the club can prove to DHHS that a suspected or confirmed COVID-19 positive person has only interacted with a small group, potentially DHHS may direct that only the small group need to isolate for 14 days – not everyone they may have come in to contact with. Ideas would include all attendees check in, 3 groups are set with a mix of batters & bowlers and rotate across the session: 1 group in the nets and 2 x 1/2 of the oval each & rotate locations every 30 mins. Groups don't mix before or after training and if multiple teams use the same facility on the day, establish a minimum 15 to 20-minute break to avoid excess congregation. Facilities with multiple ovals can have 5 groups in total (1 group in the nets and 2 groups on each oval). The more sessions in a row that the same group stays together, the less chances other groups would be impacted by a positive COVID-19 case.

All attendees are to refrain from spitting and nasal clearing and shall not use sweat or saliva on the balls

This is banned for cricket in Australia based on Cricket Australia medical advice that COVID-19 may be transmitted through both sweat & saliva.

Players should be dressed ready to train. Personal playing equipment can be shared – however it must be cleaned between use.

Having players already in training gear will reduce the need for changerooms to be opened.

Equipment sharing should be kept to a minimum and all equipment must be cleaned between use. See plan 21 of the COVID-19 plan for more information on personal equipment sharing.

Face masks are to be worn at all times by those over 11. All players (any age) are exempt from this requirement whilst batting, bowling and fielding

To comply with the intention of Victorian State Government advice for face mask usage unless you are undertaking strenuous exercise.

All attendees adhere to facility signage directions and maintain a 1.5m distance to others

All attendees must maintain a 1.5m distance at all times. Training drills should therefore ensure that everyone can maintain a 1.5m distance.

Wipe down/spray and store any equipment that has been used (including training balls) and any facilities touch points

As the COVID-19 virus can live on surfaces, it is just as important to clean equipment & items used at training at the end of sessions. Similarly, any facility touch points need to be cleaned after each use.

Store any temporary signs and sanitiser

Ensure signs that can't be secured, and club-based sanitiser are safely stored. If the club stores large quantities of sanitiser check with the manufacturer for storage instructions as the Dangerous Goods Act 1985 (Vic) has required protocols for the storage and handling of flammable and combustible liquids with respect to hand sanitiser. To reduce the likelihood of excess storage at the club consider each team storing some sanitiser for match day offsite.

Training Group Communication & equipment storing

To assist with ensuring groups remain separated prior/during/after training, we recommend clubs communicate the training groups to their players prior to them arriving at the facility. Designating areas for each group to store their equipment (bags, bats, etc.) will assist in avoiding players mixing from different groups and will allow for easier crossovers between activities. Applications like TeamApp and Social Media can be very useful for this form of communication.

RETURN TO PLAYING RESOURCE SECTION

Community Cricket matches are OK to PLAY! from Step 3 & beyond in the Victorian State Government 'roadmap for reopening'.

To help ensure the safety of all, the following guidance must be followed by all attendees:

ON ARRIVAL

- ✓ **Everyone (including spectators) must check-in on arrival (& check-out when leaving)**
 - *This will help with contact tracing should a COVID-19 case occur. If you are showing any COVID-19 symptoms before or during the match, stay away from anyone else, seek medical support or return home immediately. Only return to cricket when recovered.*
- ✓ **Use the available sanitiser**
- ✓ **Only start & continue the match if it is safe to do so** (all COVID-19 practices can be adhered to and normal risk safety assessment has been carried out).

KEEP HYGIENE FRONT OF MIND

- ✓ **Keep your distance from others (1.5m at all times) on-field and off-field**
 - *Spectators & scorers shall always remain 1.5m away from others.*
 - *Players avoid team huddles, high 5s and minimise time fielding close to an umpire or another player.*
- ✓ **Keep your mask on**
 - *Except for those under 12 & any player actively batting, bowling or fielding*
- ✓ **Keep use of facilities to a minimum** (e.g. toilet / canteen access only).
- ✓ **Keep cash in your pocket** (use contactless payment wherever possible).
- ✓ **Keep your hygiene practices up**
 - *Players & umpires sanitise hands every 10 overs and everyone to ensure regular hand washing, no spitting, no sweat / saliva on the ball etc.*

ONLY...

- ✓ **Only touch your own gear and food / drink**
 - *Don't touch anyone else's equipment or clothes – including the bowlers, cap / jumper etc. When bowling, the bowler puts their own jumper / cap over the boundary, behind the keeper or behind the umpire at the bowlers' end.*
 - *No communal food/drink - BYO or buy from the canteen.*
- ✓ **Only players should touch the match ball**
 - *The ball is to be cleaned with an alcohol-antibacterial wipe/spray every 10 overs & immediately after being touched by anyone other than a player (spectator, umpire etc.).*

KEEP AN OPEN-MIND

- ✓ **Keep an open mind as things will be different to 'normal'.** In 2020/21, Cricket will look different to cricket you see on TV (professional players almost live in a COVID-19 'bubble') and it may take more time/effort than normal. These practices will help keep you, your friends/family and the community safe.
- ✓ **Remember: cricket in a pandemic is a privilege – not a right. Get in. Play. Get Out.**

ASSOCIATION - COVID-19 RETURN TO PLAY MATCH DAY CONDITIONS

REMEMBER 'GET IN. PLAY. GET OUT.'

The following COVID-19 Return to Play match day conditions are endorsed by Cricket Victoria as required practices based on the current information available from the Victorian State Government / Department of Health & Human Services together with guidance from Cricket Australia. These have been fully endorsed by the VCCL, VMCU, VSDCA. Affiliated Associations are required to input these match day conditions.

These requirements are for the 2020/21 season only are to be read in conjunction with our Association rules and the Laws of Cricket in general. Where there is any conflict between our Association rules or the Laws of Cricket in general, these regulations are to take precedence.

VICTORIAN STATE GOVERNMENT / DHHS RESTRICTIONS COMPLIANCE

All people involved in cricket matches in Victoria must always comply with directions from the State Government / DHHS. Where there is any conflict with the requirements below, the requirements from the State Government / DHHS shall take precedence. This includes travel to and from matches and carpooling ([Regional](#) and [Metro](#)).

PHYSICAL (SOCIAL) DISTANCE & FACE MASKS

Off-field: Everyone attending cricket matches (players, volunteers, umpires, spectators, scorers, canteen staff etc.) are to keep a 1.5m distance from others at all times before, during and post-match. Those over 12 are also required to wear a face mask in accordance with DHHS directions.

On-field: Players and umpires shall not gather within 1.5m before and after play, during any breaks, following wickets and shall minimise any time spent within 1.5m of another person whilst play is underway. Umpires are required to wear a face mask; however, this is optional for on-field players.

MATCH EQUIPMENT

Anyone touching matchday equipment must sanitise their hands when setting up & packing down. Items shall be cleaned with an alcohol-based antibacterial wipe/spray - minimum 70% alcohol (ethanol or IPA) content before being touched. Matchday items includes - stumps, boundary cones or rope, tables / chairs for scorers, scorebooks, moving sightscreens, covers, rollers, mowers etc.

PERSONAL EQUIPMENT

- Personal equipment (pads, gloves, helmet and bat) is discouraged from being shared. If it is however necessary to share equipment, the first person using the equipment shall remove their gloves, sanitise their hands and wipe or spray the item with an minimum 70%-alcohol (ethanol or isopropyl alcohol (IPA) based antibacterial wipe or spray. The person then borrowing the equipment, shall sanitise their hands before use and clean after use.
- All players kit bags are to be stored at least 1.5m apart from any other player bags.
- No items worn by a player shall be touched by another person unless the item is cleaned first. This includes any items that a bowler takes off to bowl their over (e.g. jumper, sunglasses, cap). These items are not to be held by an umpire or given to another player or person, and are to be placed by the bowler themselves at the nearest of the following three locations:
 - Over the boundary at any point; or
 - At a point at least 3m behind the keeper in line with the stumps; or
 - At a point at least 3m behind the umpire at the bowlers end in line with the stumps (e.g. at the top of run-up).
 - N.B.: When an item is left on the field behind the stumps, they should be placed so they are no wider than the width of the stumps. If struck the ball is declared a 'dead ball' and re-bowled (except for helmets and fielding equipment – normal penalties apply).

COIN TOSS

- Whoever supplies the coin before the start of play shall toss the coin and pick up the coin (nobody else touching it). This should ideally be the umpire. If no coin is available, clubs shall improvise to not hold the game up – but whatever system is used, whoever supplies the coin (or stone, bat etc.) is the only person who touches it.

MATCH BALL

- No sweat or saliva shall be placed on the ball by anyone at any time. Separate procedures will be established by the Association to address accidental or intentional cases of this.
- The umpire shall not touch the ball at any stage - this includes where players or parents are umpiring. Where it is necessary to touch the ball to inspect it, the umpire shall immediately sanitise their hands before & after inspection (or wear disposable gloves and dispose of them immediately after use).
- The ball shall be cleaned with an alcohol-based antibacterial wipe/spray (- with minimum 70% alcohol (ethanol) content after the completion of every 10 overs, at any scheduled break (drinks, lunch, afternoon tea) and if the ball has been touched by hand by any off-field person (spectators, coaches, parents etc.). If a wicket falls during an over when a break was planned, the ball shall be cleaned immediately. This shall be completed by the bowling team captain (or another designated player if the captain is a keeper) in sight of the central umpire and/or junior coaches. Wipes/spray may be held by the umpire, captain or be left with the scorers as agreed by competing teams but shall be disposed of immediately (or placed in a secure zip lock bag until the next break).
- After a wicket, the ball shall be left next the stumps at the bowling end for the next delivery and be collected by the bowler when getting ready to bowl the next ball.
- During each scheduled break, the ball shall not be touched by anyone. It may be placed in a zip lock bag or put in a box and held to ensure security.

NO COMMUNAL FOOD / DRINKS

- No communal food / drinks shall be supplied by clubs. Players and officials shall either bring their own personal drinks / food or purchase at any available canteen / kiosk.
- Any food brought to the match should be in a sealed or pre-packaged container.

HAND SANITISER (ALCOHOL-BASED ANTIBACTERIAL WITH MINIMUM 70% ALCOHOL)

- All attendees shall sanitise their hands upon arrival at the ground.
- All players, umpires and officials (including scorers, coaches etc.) shall also sanitise their hands every 10 overs (this can be at the fall of a wicket in the designated over).

TEAM SHEETS / SCORING

- No physical team sheets shall be shared with the opposition. Where teams are not already selected on MyCricket before play (recommended), team sheets can be filled out and remain in the scorebook with a photo taken or teams can be entered in approximate batting order (and batting numbers adjusted if required).
- Scorers shall maintain a 1.5m distance at all times. Any equipment used (iPad, scorebook, pens) shall be wiped - with an alcohol-based antibacterial with minimum 70% alcohol (ethanol or IPA) before use and each time a new scorer is required.

SWEAT AND/OR SALIVA ON THE BALL

- If sweat and/or saliva is placed on the ball, [please refer to the Sweat and/or Saliva Playing Conditions document.](#)

EVERYONE HAS A RESPONSIBILITY TO ENSURE THAT THESE REQUIREMENTS ARE FOLLOWED.

IF THESE PROTOCOLS CANNOT BE ACHIEVED THEN PLAY SHOULD NOT PROCEED.

IF IN DOUBT ON MATCH DAY CALL

GENERAL ADDITIONAL INFORMATION SECTION

GENERAL COVID SAFETY PROTOCOLS FOR COMMUNITY CLUBS

To help ensure that all Community Cricket Clubs and Associations in Victoria have quality practices in place, the following additional details for part of this plan. They shall be adhered to and communicated widely by Associations and Clubs to all club committee, members, families & players.

POSITIVE COVID-19 CASES

Localised outbreaks may require clubs to restrict activity and clubs must be ready to respond accordingly. The detection of a positive COVID-19 case in a club will result in a standard public health response, which could include quarantine of a whole team or large group, and close contacts, for the required period.

Facilities may be closed on the instruction of the local Public Health Authority or the Chief Health Officer. Re-opening of the training facility should only occur after close consultation with the local Public Health Authority.

Where there is a positive COVID-19 case, the player or official must notify their Club immediately. The Club must notify the Public Health Authority and their Association(s) who will notify Cricket Victoria. The Club and Association(s) must then follow the advice of the Public Health Authority or Chief Health Officer who will determine requirement for quarantining individuals, groups or teams (and their close contacts) and whether the club's facilities can be used.

HYGIENE

- Minimum 70%-alcohol (ethanol or isopropyl alcohol (IPA) based antibacterial wipe or spray must be readily available at facilities for all training/games.
- Soap/Handwash must be readily available in all bathrooms / toilets.
- Clubs must ensure that frequently touched surfaces and objects (e.g. tables, countertops, light switches, doorknobs, and cabinet handles) are cleaned regularly when in use.
- Ensure there are plenty of bins situated around the facilities and cleaned regularly.
- Minimise use of communal facilities (toilet or medical use only with strict social distancing).
- Hygiene posters displayed (templates available on Cricket Victoria & Cricket Australia website).

CLEANING

- Take all reasonable steps to ensure that frequently touched surfaces accessible to members of the public, including tables, bars, chairs, toilets and handrails, are cleaned regularly including when visibly soiled and post events or between groups.
- Shared equipment, including training balls, cones, stumps, rollers, mowers, pegs and covers (main touch points) must be cleaned with antibacterial wipes/spray or alcohol-based (ethanol) sanitiser prior to and after training and matches.
- Entry and exit points to the playing surface (e.g. gates) and training nets should be cleaned between training sessions and matches.
- Cleaning principles can be found via the SafeWork Australia website which should help as a reference point to what cleaning guidelines are recommended. <https://www.safeworkaustralia.gov.au/sites/default/files/2020-09/cleaning-table-covid19-2september2020.pdf>.

FIRST AID PERSONNEL

All club First Aid Personnel should complete the free 30 minute Australian Government COVID-19 infection control training available online via <https://www.health.gov.au/resources/apps-andtools/covid-19-infection-control-training>.

- First Aid Personnel must follow protocols as outlined in infection control training (i.e. disposal of gloves in between treatments, wearing of face mask).
- All first aid equipment should be cleaned and sterilised before and after you use it.

COMMUNICATION

- Communicate with all members via email, video technology and Social Media platforms the protocols and procedures of this COVID-19 Safety Plan.
- Display this COVID-19 Safety Plan on club website.
- Conduct a preseason meeting using video technology for all players, coaches and parents regarding the training and match day protocols and procedures.
- Host any necessary communications (e.g. meetings, planning sessions, Meet the Coach sessions, etc.) remotely using video technology, or in venues where social distancing can be practiced.
- Clubs to communicate with opposition teams prior to match day about access and procedures in place for the relevant venues.

CANTEEN / BAR / CANTEEN FACILITIES

- If the facility is open (with council approval) any areas touched will need to be regularly cleaned before and after use and noting [industry restart hospitality guidelines](#) including the [four and two square metre rule](#) and use of density signage.
- Anyone accessing the canteen and bar facilities must always comply with hygiene & social distancing protocols. It is strongly suggested to only serve 'takeaway' food / drinks for outdoor consumption only to ensure clubs do not need to meet more stringent indoor hospitality protocols that are the equivalent of restaurant dining / dine-in cafes.
- As per the following guidance available via [Food Standards Australia / NZ](#), general hygiene practices for canteens/bars are the key aspect to reduce the spread of the virus. In addition to anyone serving in the canteen (and buying from the canteen) complying with current face mask requirements, the following guidance is provided from Food Standards Australia / NZ (last updated 21 August):

The best ways to prevent the community spread of coronavirus disease (COVID-19) are for everyone to maintain effective hygiene and follow social distancing rules.

The Food Standards Code requires food businesses to take all practicable steps to prevent contamination of their food service or processing environment.

Effective hygiene

- *Maintaining effective hygiene includes:*
- *regular handwashing.*
- *cleaning and sanitising facilities and equipment.*
- *maintaining strict requirements around worker health and hygiene; and*
- *implementing social distancing.*

Cleaning and sanitising

You must ensure you're cleaning and sanitising the following, regardless of COVID-19:

- *all eating and drinking utensils and all food contact surfaces.*

We advise you to review your cleaning and sanitising practices to ensure general surfaces are also cleaned frequently and effectively. These include door handles, refrigerator handles, tap handles, switches and other high-touch areas.

Check if you're covering the Australian Government Guidelines for routine environmental cleaning on the [Department of Health website](#). You should add anything to your standard procedures for cleaning and disinfection of your business premises if necessary.

Cleaning and disinfection following a case or suspected case of COVID-19

In the event of COVID-19 exposure, a more thorough and extensive cleaning and sanitising regime may be required. For guidance see [cleaning and sanitising for food businesses in response to COVID-19 exposure \(771 KB\)](#).

SPECTATORS

- Make sure you are aware of the latest [DHHS / SRV](#) ruling re: spectator limitations
- Clubs should have posters up encouraging good health, hygiene, attendance register and social distancing requirements
- All clubs should monitor crowd social distancing and face mask use to help reduce the likelihood of the virus spreading and to help comply with State Government rules. If required (in extreme cases) report any non-compliance to Victoria Police.

MORE INFORMATION

STRATEGIES TO HELP CLUBS/TEAMS MANAGE TRAINING AND GAMES

- Matches should be completed on a single day (e.g. T20 / one day games) to firstly ensure the maximum number of matches are played in the season and also to avoid complications should a player or a number of players need to isolate due to COVID-19 during the course of a match played over multiple days.
- For Woolworths Cricket Blast protocols – check out the latest Cricket Australia guidance provided via <https://www.community.cricket.com.au/clubs/covid-19/return-to-playing>
- Additional shade should be considered for scorers and players should adequate shade not be available from the facility / trees
- Ensure that the club is maximising its opportunity to access grants to assist the club with COVID-19 equipment through the various grants available - <https://www.cricketvictoria.com.au/clubs-support/grants/>.
- Ensure parents / player are aware that equipment sharing should be kept to a minimum , and all equipment must be cleaned inbetween each use. Consider season long loans for any club equipment that needs to be borrowed by players
- Staggered training schedules should be adopted where multiple teams are using the same ground/facilities (e.g. start times, different days, potential of different locations, etc.)
- Communicate training groups prior to player prior to the sessions and have designated areas for each group to store their equipment
- Use adequately spaced markers on the floor in pavilions to promote physical distancing
- Specific to under-age matches, parents and/or care givers are encouraged to limit their person-to-person contact on site when taking their child/children to training or games
- Parents and/or care givers should be encouraged to prepare their child/children for training in accordance with the above principles – for under-age training & games
- Parents/guardians should be encouraged to limit drop-off/pick-up to only one parent/guardian and other dependents as required and necessary. For those staying at venues, social distancing and gathering regulations must be adhered to
- Minimise use of change rooms (i.e. use toilets, medical rooms only) – but always adhere to the latest facility density ruling – See [DHHS](#) website for the latest (i.e. '4 square metre rule')
- Avoid social gatherings after training and games. This may be eased later in the season.
- Transport - Adhere to the latest advice from [DHHS](#) regarding travel to and from games – including car-pooling
- Players & parents/guardians are encouraged to ensure all training and match day clothes should be removed as soon as possible on returning home and machine washed at a minimum 60 degrees Celsius water temperature (be careful when mixing colours and whites/creams)
- Reach out to your local council / facility manager (and any schools that clubs train / play on) to discuss facility access, cleaning, signage etc.

Remember: 'Cricket in a pandemic is a privilege, not a right.'

We all need to ensure we are all doing the right thing to ensure the safety of players, volunteers, officials and the local community.

ADDITIONAL WEBSITES / LINKS

Below is a list of resources & websites which may assist the Association and Affiliated clubs to obtain more information and guidance to deliver quality practices.

[Cricket Victoria](#)

[QR Code/Attendance Register](#)

[Attendance Capacity Poster](#)

[Spectators Poster](#)

[Restricted Training Group Size Setup](#)

[COVID-19 Safety Officer Register](#)

[Sweat and/or Saliva Playing Conditions](#)

[Cricket Australia](#)

[COVID-19 resources, posters, useful links, Woolworths Cricket Blast guidance](#)

[COVID-19 equipment & signage](#)

[Example of a facility set-up with COVID-19 signage](#) (outside the clubrooms)

N.B.: Free facility posters / signage can also be downloaded from the [DHHS website](#) and via [Cricket Victoria](#) or [Cricket Australia](#) and clubs can purchase signage and other COVID-19 products from various local outlets including – [Bunnings](#), [Chemist Warehouse](#), [Officeworks](#), [Buffalo Sports](#) or your local suppliers

[Department of Health and Human Services](#)

[Sport Australia](#)

[Vic Sport](#)

[Sport and Recreation Victoria](#)

[Federal Health Department](#)

[Online e-training module for COVID-19 Safety Officers](#)

[Safe Work Australia](#)